

# ExifExtractor NG

## User Manual



# Exif Extractor

alta4 Geoinformatik AG  
Frauenstraße 8-9  
54290 Trier  
Germany  
Ph: +49.651.96626-0  
Fax: +49.651.96626-26  
[www.alta4.com](http://www.alta4.com)  
[info@alta4.com](mailto:info@alta4.com)

Copyright © 2009 alta4 Geoinformatik AG

All rights reserved.

We have compiled the following texts and illustrations with the greatest care. Nevertheless, mistakes can never be completely ruled out. alta4 can assume neither juristic responsibility nor any kind of liability for faulty information and its consequences.

We are grateful for suggestions for improvement and indications of mistakes.

ESRI, ArcGIS, ArcView, ArcMap and ArcReader are registered trademarks of ESRI Inc. RICOH and Capli 500SE are registered trademarks of RICOH Company Ltd. All other hardware and software designations as well as company names used in this manual are also registered trademarks of the respective owners and should be considered as such. In the product descriptions we generally use the producers' spelling.

## Table of Contents

1	What's New in ExifExtractor NG?	2
2	Installation and Licencing	3
2.1	System Requirements	3
2.2	Installation	3
2.3	Licensing	3
2.4	Deinstallation	4
3	Description of Functionality	5
3.1	Select Import Folder	6
3.2	Rename and Move Files	6
3.2.1	Alter the File Name Pattern Using the Rename Settings	7
3.2.2	Options	7
3.2.3	Output Directory	8
3.3	Output Formats	8
3.4	Exif Filter	10
3.5	PDF-Export	11
3.5.1	Grouping	11
3.5.2	Layout	12
3.5.3	Title Page	13
3.6	User Defined Values	14
3.7	Save Settings	15
4	ExifExtractor NG Service Functions	16
4.1	Info-Menu	16
4.1.1	Change Licence	16
4.1.2	Update-Verification	17

## 1 What's New in ExifExtractor NG?

The stand-alone software ExifExtractor NG allows the automatic processing of GPS photos and generates a multitude of output formats.

These facilitate the integration of GPS photos in various geographic information systems and mapping applications.

The most widely-used formats are the Shape-file format and KML. The latter permits the publication of your images in Google Earth.

The updates in ExifExtractor NG puts you as the user in the position to sustainable manage and sort your images.

With the batch-function, the photos may be collectively renamed following individual rules or may be moved. With subsequently inserted data fields and respective information during the batch processing, additional attributes may be recorded in the output file, like, for example, the weather at the time of exposure being “sunny” or “rainy”.

These informations are collated in the attribute table of a Shape-file.

### What's New in ExifExtractor NG 3.5:

- **Creation of PDF Reports based on Exif-Fields**

### What's New in ExifExtractor NG 3.0:

- New output format KMZ
- Manual selection of read-out Exif-fields
- Comfortable batch processing for renaming and moving data following individual rules
- Batch function allowing subsequent adding of fields and contents to the output file

## 2 Installation and Licencing

### 2.1 System Requirements

Disk space	15 MB
Operating System	Windows 2000, NT or XP
Image Acquisition Technique	Digital camera RICOH Caplio 500 SE with GPS-Device or comparable system for digital image acquisition and storage of GPS information within the photograph's Exif header
System rights	For installation and deinstallation adminintrator rights are required

### 2.2 Installation

Please affirm that you have the relevant administration rights required for installation.

1. Start the MSI-file by double-clicking. The installation window will automatically appear.
2. Read the licence agreement and accept it by checking the box "I Agree" and click "Next>".
3. Then you are requested to select the installation folder. When done, continue by clicking "Next>". By another confirmation the installation process is being started.

The installation is then complete. If you encounter problems, please refer to our technical support at [alta4](mailto:alta4).

The installation process has added a link for starting ExifExtractor to the Windows start menue and your desktop.

When you start the program you have the possibility to load your licence file, please refer to the next section.

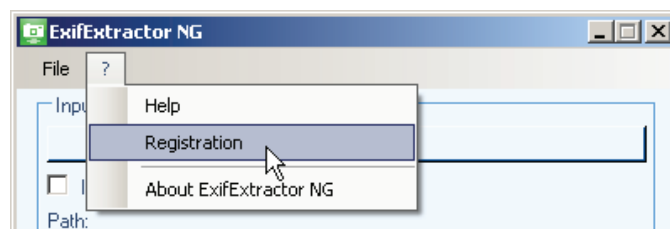
### 2.3 Licensing

Should you not yet own a licence file, the ExifExtractor NG demo version will be loaded.

After acquiring a commercial licence, you have the possibility to change to full functionality without a new installation. As soon as you start the programme, the following window pops up:



When you close this window, the ExifExtractor is started in demo mode.



By clicking the help menu “?” and selecting “Registration” from the drop-down menu the ExifExtractor NG – Registry window opens:



To load your licence file (\*.lic) to swap to full functionality, please click on the „Change licence“ button and navigate to your licence file. A pop-up window appears informing you that the registration was successful.

In case you want to continue using the demo version, simply click „Ok“. Exif Extractor NG will be opened.

## 2.4 Deinstallation

ExifExtractor NG can, like any other Windows software, be deinstalled via system control. You will need administrator rights to do so.

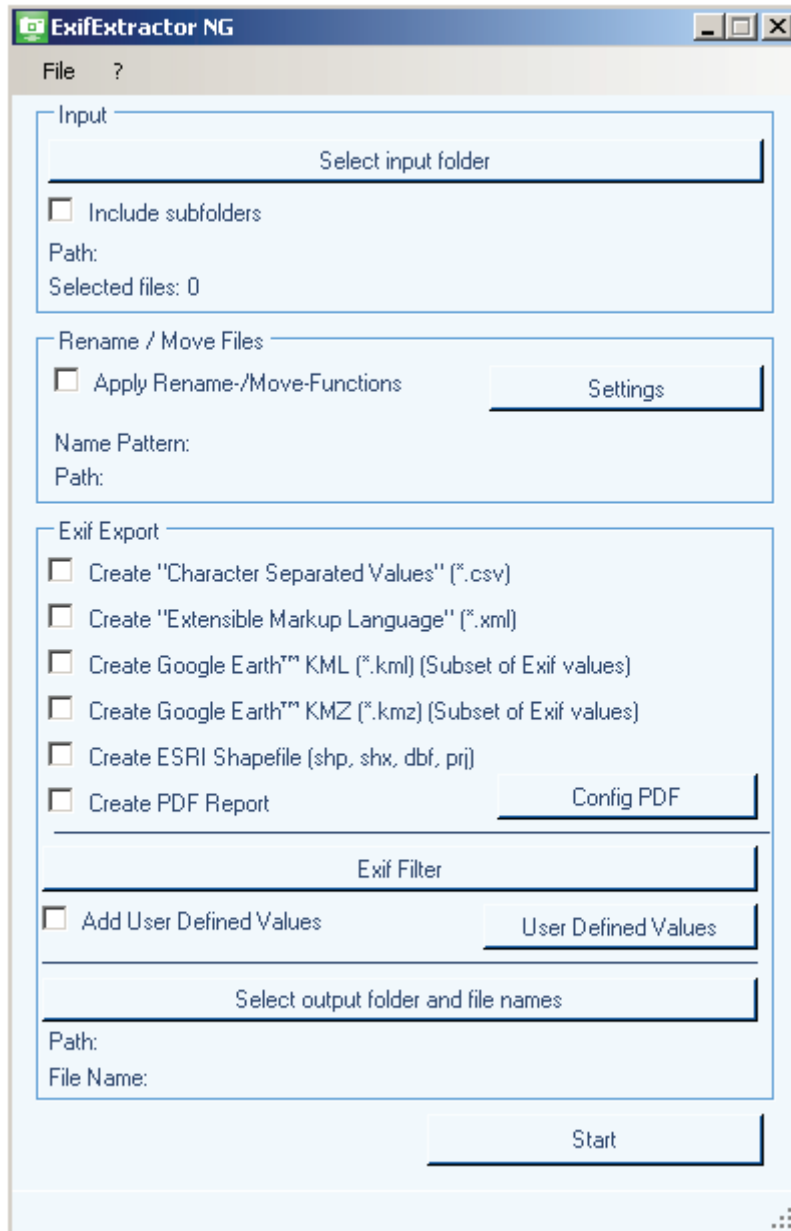
1. Exit ExifExtractor NG
2. Open the Windows Start menu and select „Settings“ > „System Control“ > „Software“.

Choose ExifExtractor NG from the list and click on „Change/Delete“.

### 3 Description of Functionality

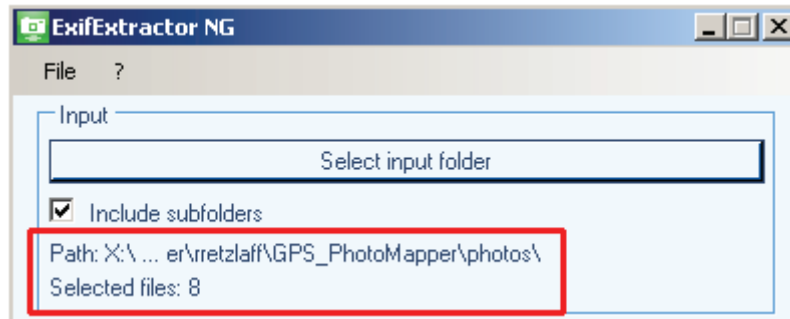
Please start ExifExtractor NG using the desktop link or the Windows start menu.

The ExifExtractor NG interface appears:



### 3.1 Select Import Folder

Click the button „Select input folder“ and mark the input directory you want to process. Do you wish to integrate photographs stored in subfolders, check the box “Include subfolders”.

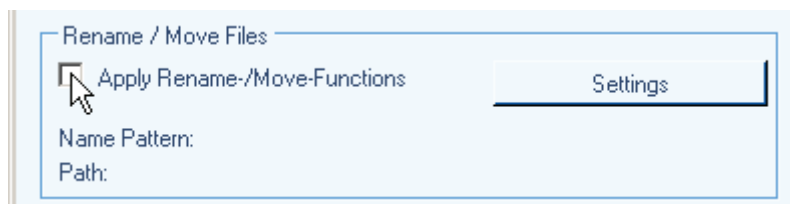


The number of photographs that contain GPS information in their Exif header is shown.

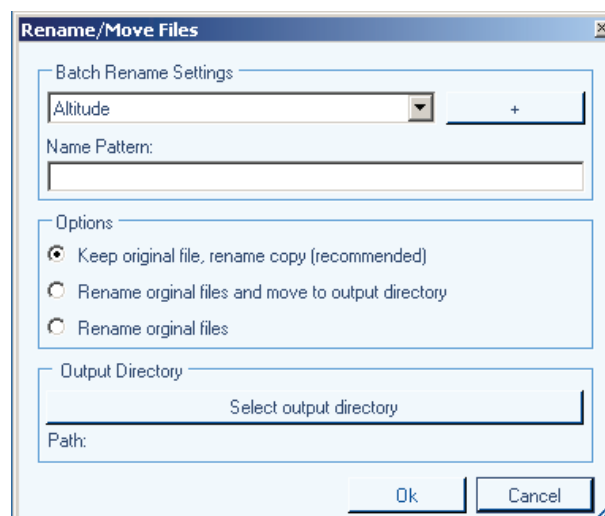
### 3.2 Rename and Move Files

The ExifExtractor NG offers a valuable „rename“ and „move“ function, in case you would like to rename your image files following a customized pattern.

Should your photos be renamed during the import process, please click the box next to „Apply Rename-/Move-Functions“.




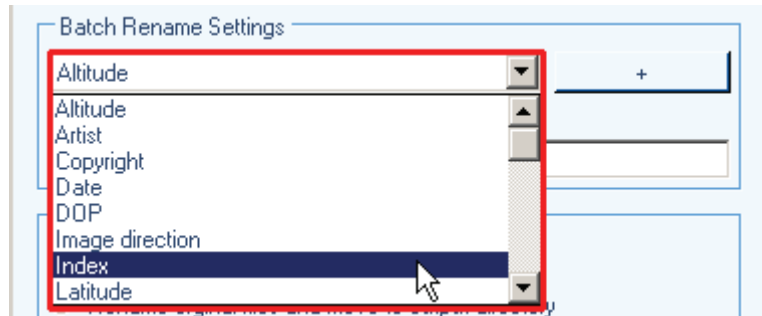
The pop-up window „Rename/Move Files“ appears:



Here, the user may alter the “Batch Rename Settings”, the renaming options and choose the output directory.

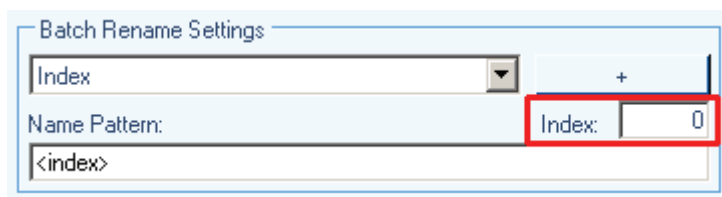
### 3.2.1 Alter the File Name Pattern Using the Rename Settings

The „Batch Rename Settings“ allow the user to modify the structure of the new photo file names. Simply choose the desired exif information from the drop-down list and add it to the “Name Pattern” input box using the  button.



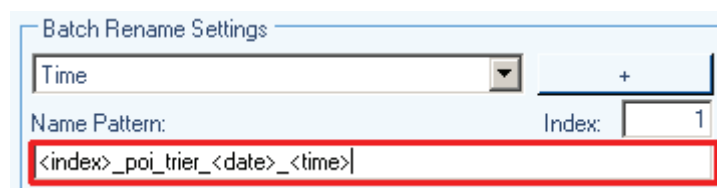
The element will be placed in the text field „Name Pattern“. The user may alter the order of the name elements and insert other strings to be used in the file names. If there is an error in the syntax, the text field will be highlighted in red.

With the input box „Index“ you may number your photographs. If you choose indexing, an additional input field appears (“Index:”):




Here, the user may define the number used for starting the indexing. The default value is “0”.

#### Example:

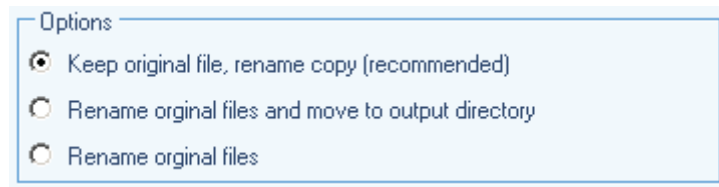


Following these settings, a file with the name „1\_poi\_trier\_2009-07-01\_10-15-23.jpg“ will be imported.

Once these settings have been made, the user may modify the specifications by clicking on the  button.

### 3.2.2 Options

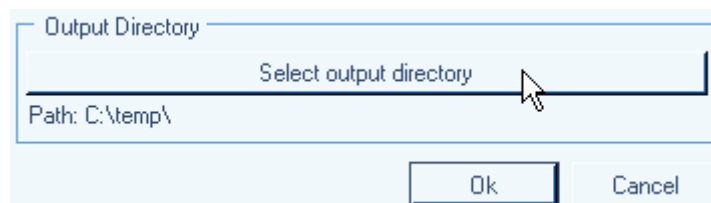
Under „Options“, the user may define if the output file names are kept or altered:



- If you want to keep the original name and rename only the copy, please select the first option.
- In case you want to rename the original file names and move them to the output folder, please select the second option.
- If the renamed original files are to remain in the same folder please choose the third option.


### 3.2.3 Output Directory

Please define the output directory by clicking on the button “Select output directory” and select or create the respective folder.



If under „Options“ you have selected the third option, to rename the original files and not move them, no output directory is required.

### 3.3 Output Formats

Select the required output formats listed under „Exif Export“ and start the import operation by clicking . Five different formats are available:

#### **Character-Separated-Values - File (\*.csv):**

CSV-files permit the integration of your data into Microsoft Excel or into databases.

#### **Extensible Markup Language (\*.xml):**

The in importance gaining XML-format offers a platform-wide integration of photos within your projects.

#### **Google Earth Keyhole-Markup-Language (\*.kml):**

KML-files are the exchange format of the software Google Earth.

Use this format to illustrate your images in Google Earth.

The KML-file may also be used to plan a route with Google Maps. The route may then be downloaded and used in a mapping programme or in a GPS receiver.

#### **Google Earth KMZ (\*.kmz):**

The KMZ-format is a compressed KML-file in ZIP format. In the KMZ-file, additionally, the photographs are stored so that this format is especially appropriate for sharing your projects.

**ESRI Shapefile (\*.shp + \*.shx + \*.dbf + \*.prj):**

Beside the SHP-file the SHX-, DBF- and PRJ-files are generated.

The format offers the possibility to integrate the image location as a point layer in shapefile-compatible geographic information systems. The name and paths of the associated photos are stored in the attribute table.

**Portable Document Format (\*.pdf) :**

The PDF format can be illustrated and printed with Acrobat Reader and other illustration programs. Beside text and vector graphics, it may contain images. For more information on PDF export, please refer to section 3.5.

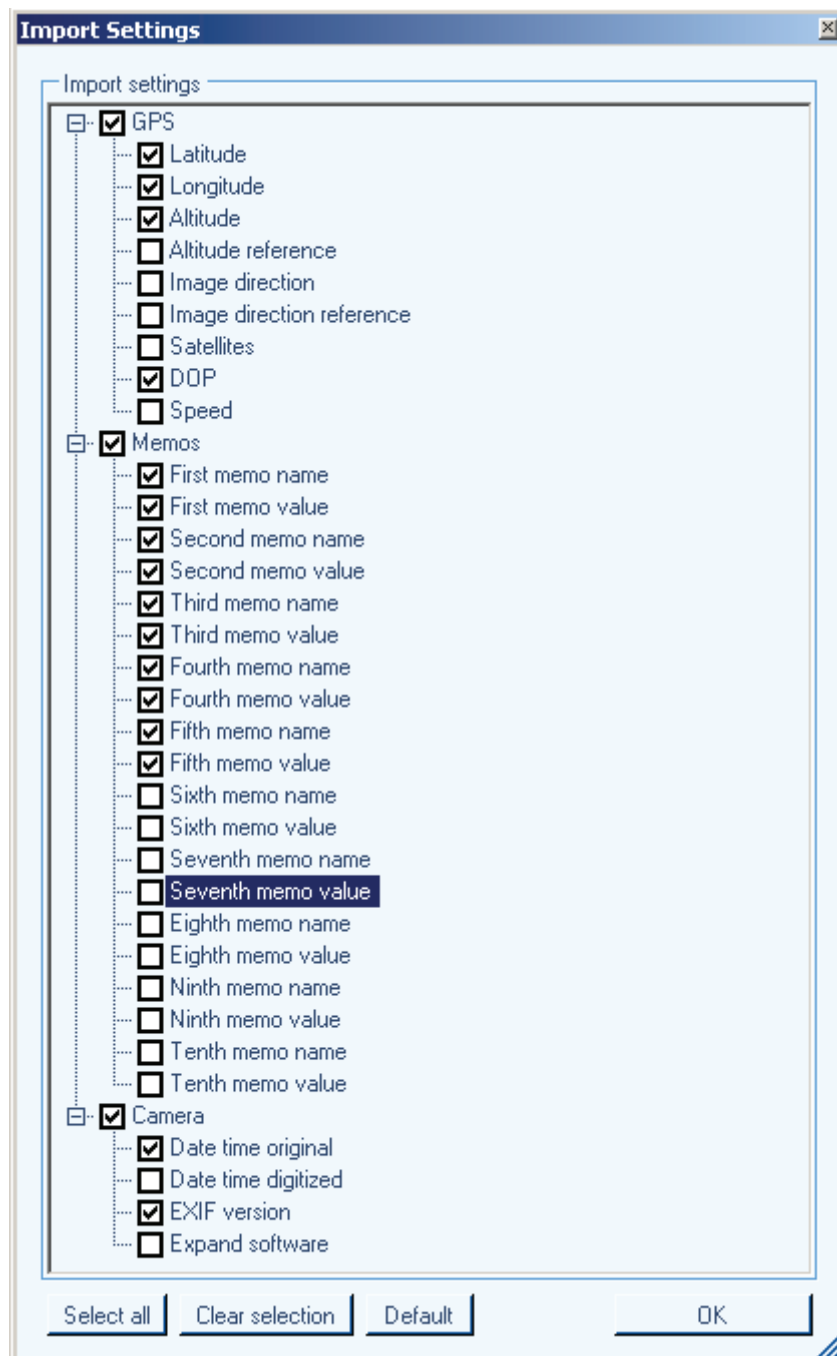
### 3.4 Exif Filter

ExifExtractor NG offers to import only selected items of the exif information.

Please open the Exif Filter Menu by clicking on the



The „Import Settings“ pop up where you may define which exif items will be saved to the output file. You may uncheck all information you don't require.

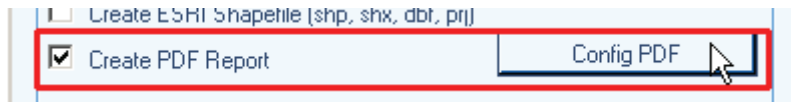


Please note, that the filter will not be applied for the generation of KML- and KMZ-files.

### 3.5 PDF-Export

The PDF-export allows to generate several PDF files containing not only the exif information but also the respective photographs. The selected photos are grouped with the help of exif fields, e.g. all images of a specific bar code, and then written to a PDF.

To configure the PDF-export, check the “Create PDF Report” box, select an output folder and finally click on 



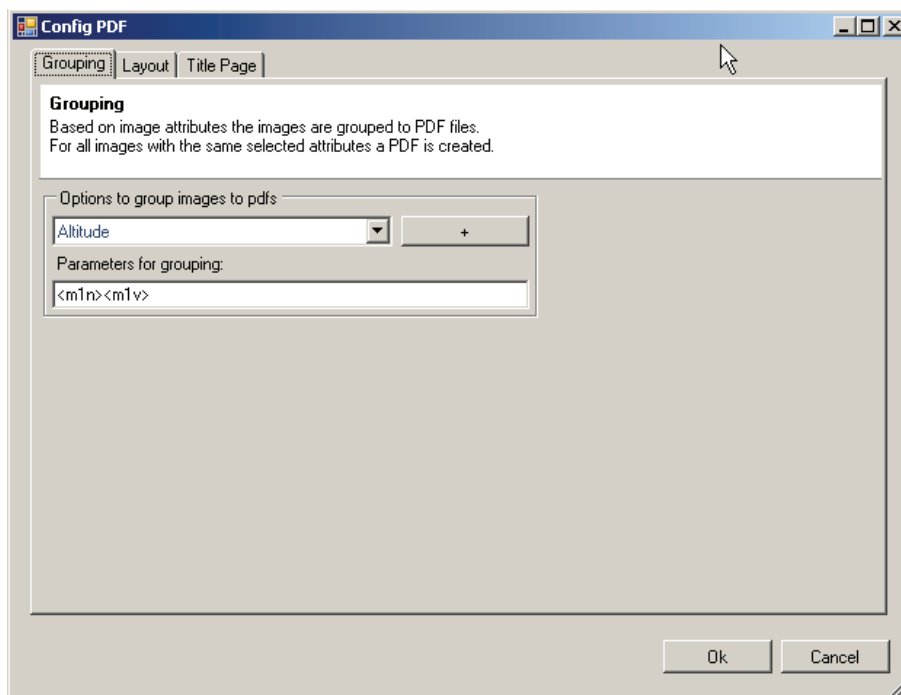
Thereupon, the configuration menu appears where you can set the exif information used for grouping, design the layout and title page.

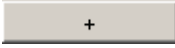
#### 3.5.1 Grouping

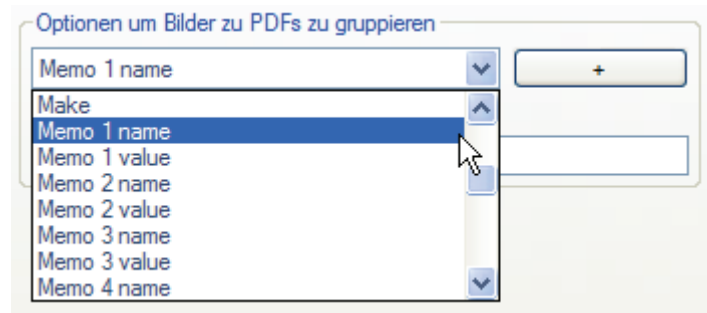
In this slider the scheme used to group the photos to PDFs may be defined. The PDFs will be named following the defined naming scheme using exif information. The selected output directory and file name will be used as a prefix. If only grouping parameters are used for naming, the file name should be given as “\_” (without quotation marks).

In case grouping is not required, leave the input field „Parameters for grouping” empty. Then all images will be saved in one PDF.

The settings of grouping items are carried out analogously to the renaming of file names (see section 3.2). In case you are confident with file renaming, you may skip the following description.

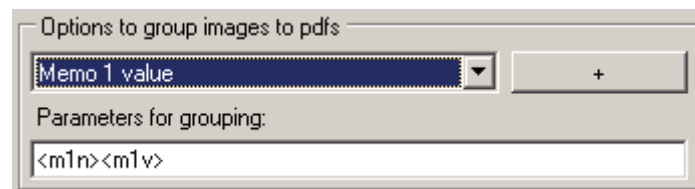


Please select the required exif information from the drop-down list and click on the  button.



The element will then be placed in the text field „Parameters for grouping:“. Here, you may modify the order. In case of syntax errors, the text field will be highlighted in red.

**Example:**



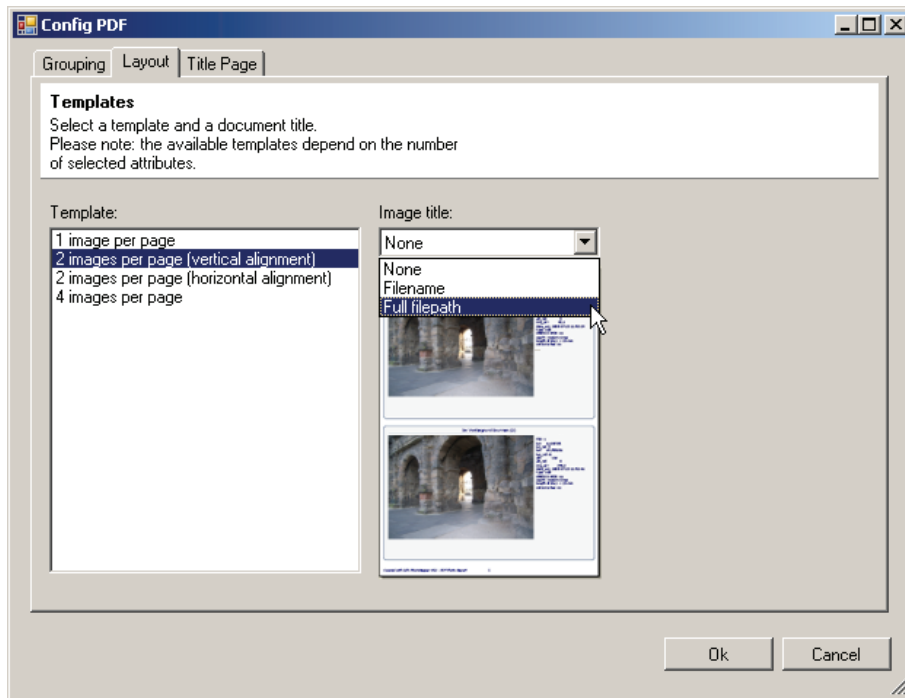
Consequently, a PDF is generated for all photographs with the same values in the first memo name and value field. The PDFs will be named following these values, e.g. “barcode123.pdf”, “barcode124.pdf.”

### 3.5.2 Layout



The layout slider helps you to configure the page layout. Templates can be selected which define how many photographs are illustrated on a page. The number of templates provided depends on the number of exif items selected for output. If a large number of exif items are to be exported, it may not be possible to place more than two images per page.

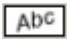
Furthermore, an image title may be used. You can choose between the following options:

- “None”: no image title will be used
- “Filename”: the file name will be used as image title
- “ Full filepath”: the complete directory path and file name will be used as image title.



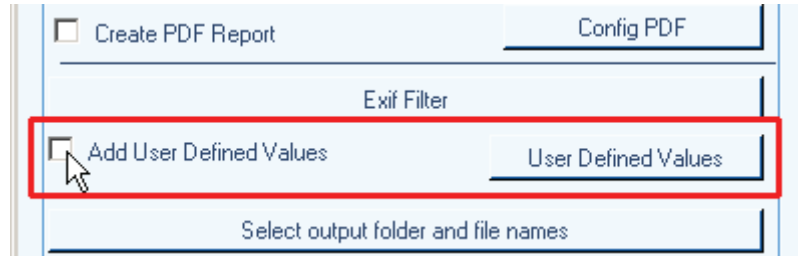
### 3.5.3 Title Page

For the PDF report, a title page may be designed by checking the “Create title page” checkbox in the slider “Title Page”. A logo may be included by clicking on the  button. In the following dialogue, the user can select the respective image file. Likewise, a title may be inserted by filling in the “Title:” text box. A click on the  button opens the font dialogue.

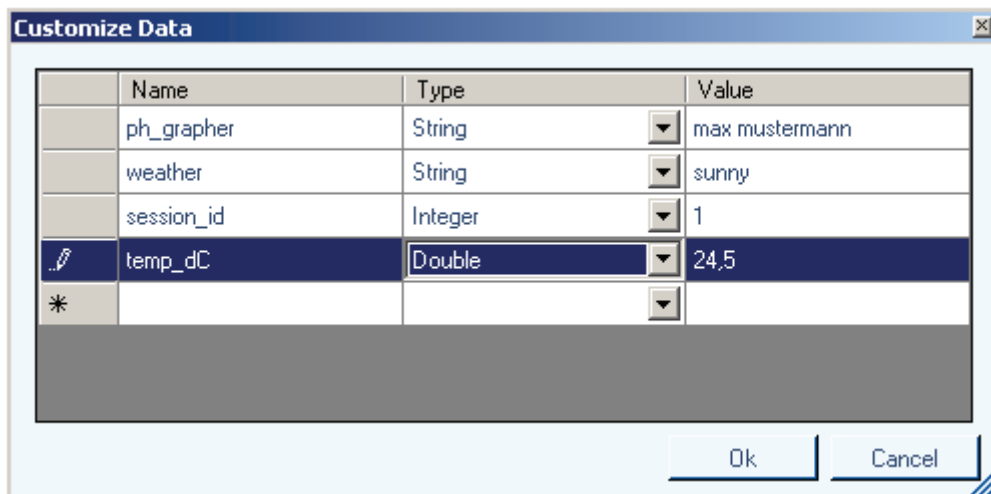
Additional text can be inserted with the help of the „Description:“ table. To insert a new row simply click on the bottom line. Similarly, the font may be modified using the  button.

### 3.6 User Defined Values

The user may attach additional customized information to each photo, e.g. to define the photographer or the weather for each shot. You simply click on the field “Add User Defined Values”:



The input menu „Customize Data“ appears:



Under “Name”, you can add the desired name for your additional attribute field. Currently, the field name may consist of 10 characters, allowed are lower case and upper case letters, numbers and underscore “\_”.

In the field “Type” you may define the relevant data type. For text use “String”, for whole numbers “Integer” and for decimal numbers the data type “Double”. Finally, you may introduce default values used for each photograph. These are typed into the “Value” field.

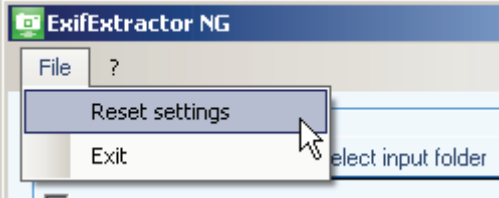
Save your customization by clicking

If you want to modify your customized fields again, click on the button from the main menu to retrieve the input table.

Please note, that your customized fields will not be saved to KML- or KMZ-file formats.

### 3.7 Save Settings

Once you exit the ExifExtractor NG your settings will be saved. After a new start, the program recalls your configuration. If you like to reset the settings to the default values, please choose “File – Reset settings”.



## 4 ExifExtractor NG Service Functions

The ExifExtractor NG service functions may be reached by the service menu. Click on the question mark and select “About ExifExtractor NG”.



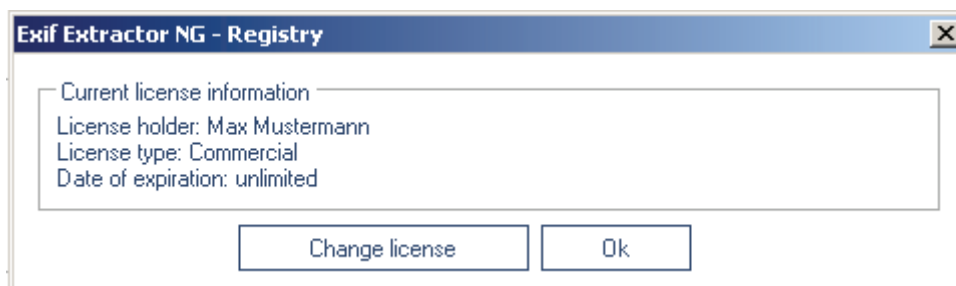
Now information about the ExifExtractor version will be retrieved.




### 4.1 Info-Menu

#### 4.1.1 Change Licence

In the service menu click on “Registration” to change your licence type.



You can load your licence file (\*.lic) by clicking the  button. The modification becomes activated at once without having to restart the program.

### 4.1.2 Update-Verification

At each new start ExifExtractor NG verifies if an update exists. In this case, you are invited to download and install the patch.

